



WALLI

300X  
600MM  
TILES

PRESENT THE ICONIC DESIGN  
OF INDIAN WALL **TRADITION**



## ENDLESS ETHIC

Company makes emphasis on quality measures the most. The total quality management principles the constant practice of improving in technology and manpower knowledge helps company to improve quality on regular basis.

Within a short period of time we have set up our network across India, and not only that we have make our presence in abroad also, and today we are exporting our many international buyers.

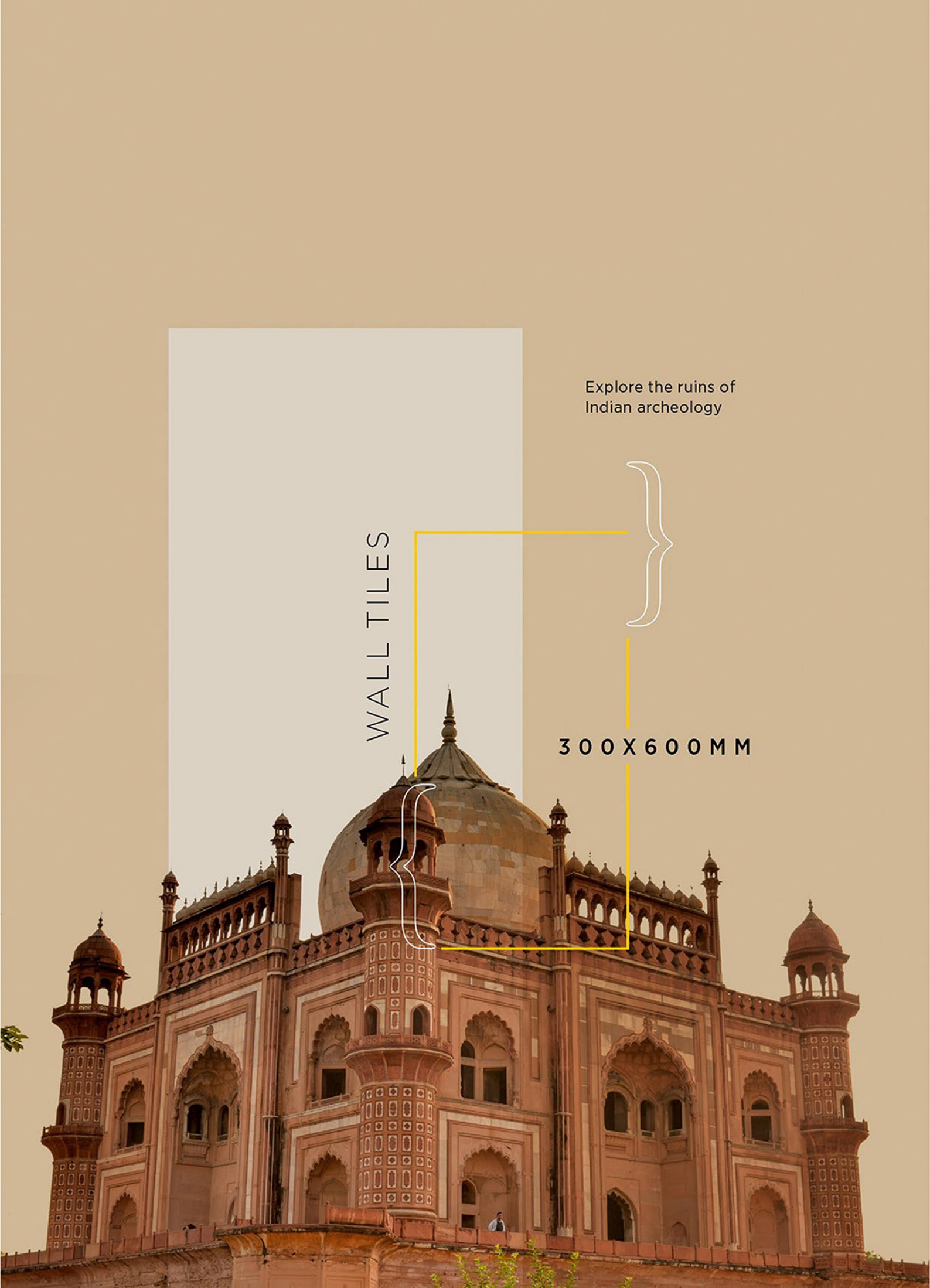
So if you need quality product with innovation in design and technology, will the right option for you.

We are just call / mail away.....

Explore the ruins of  
Indian archeology

WALL TILES

300 X 600 MM





Resistance to  
UV Rays



Resistance  
to Stain



Resistance  
to Frost

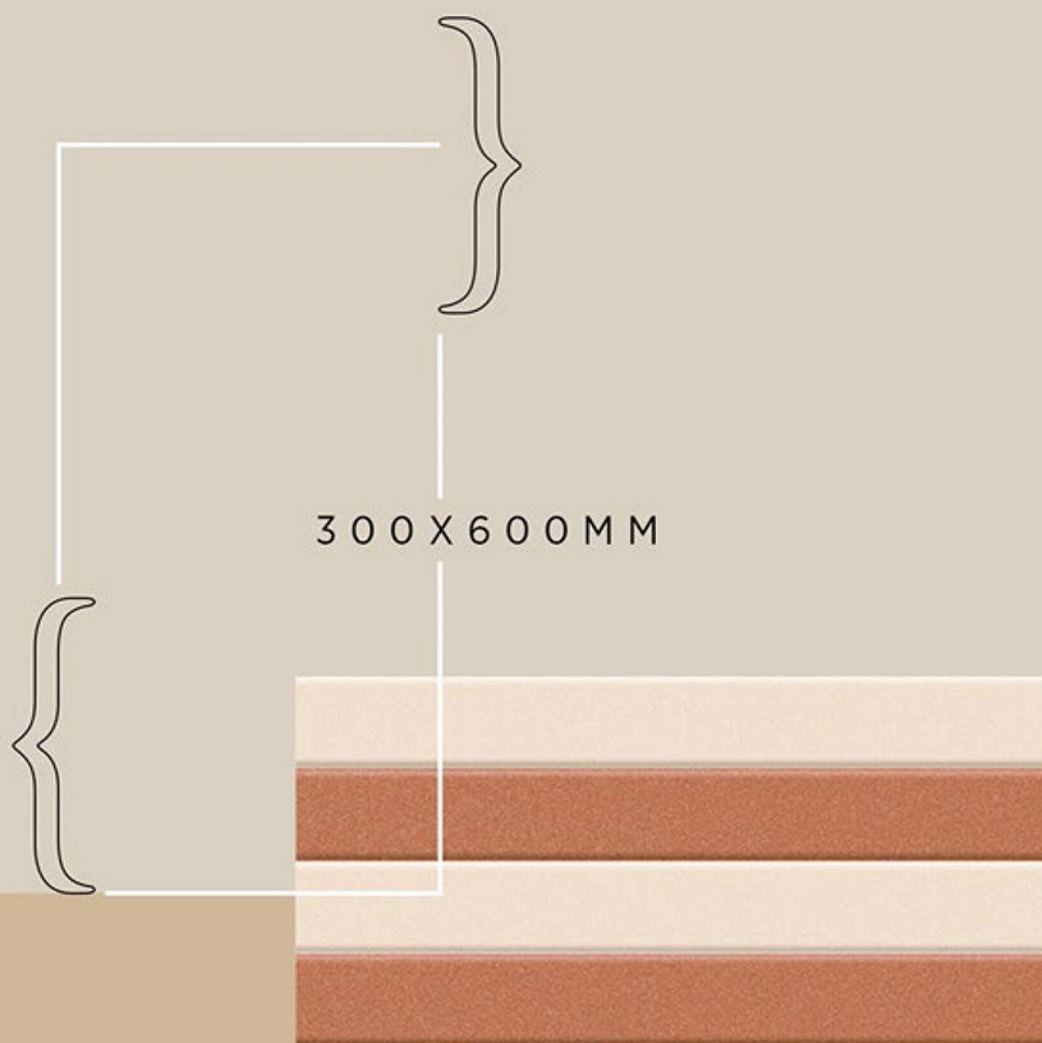


Resistance to  
Chemicals



100% Water  
Proof



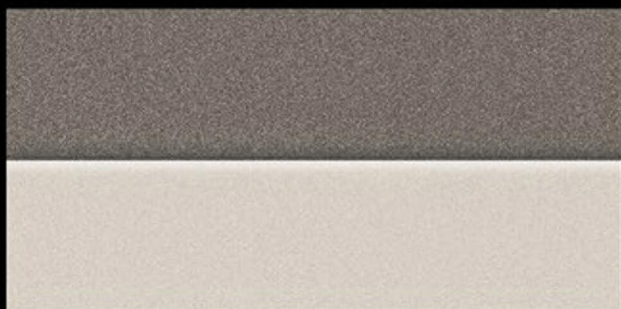
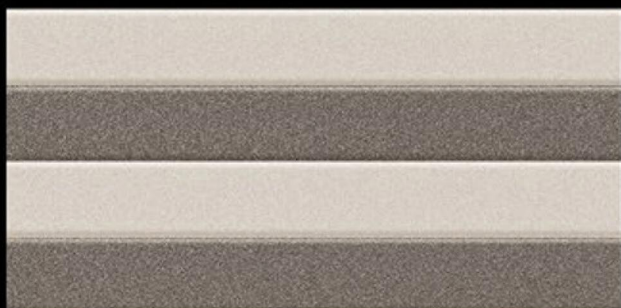
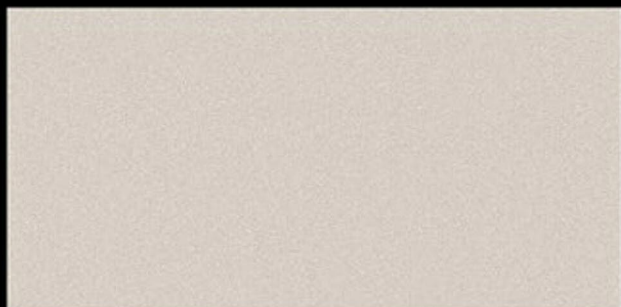


300 X 600 MM

The beauty of ancient style

MATT  
SERIES

# Wall Tiles 300X600 MM



1-6038\_LT  
2-6038\_HL\_1  
3-6038\_HL\_2  
5-6038\_DK



1-6038\_LT\_2  
2-6038\_HL\_3  
3-6038\_HL\_4  
4-6038\_DK\_2



WATERPROOF  
SURFACE



CHEMICAL  
RESISTANCE



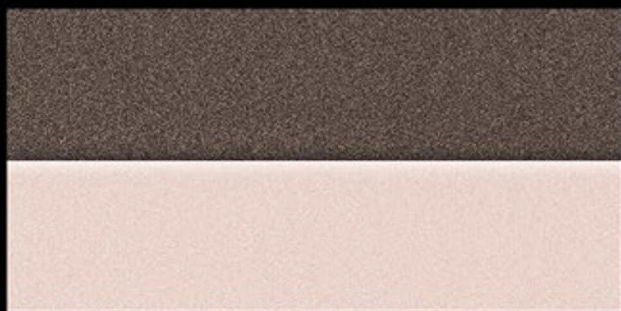
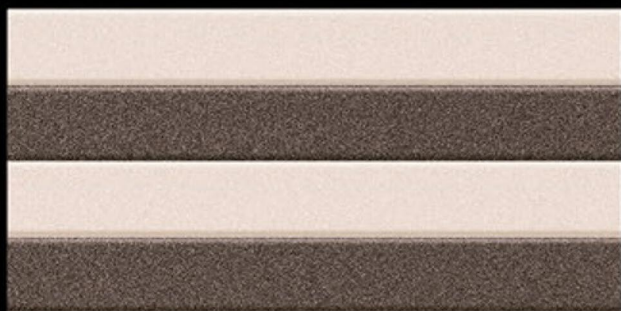
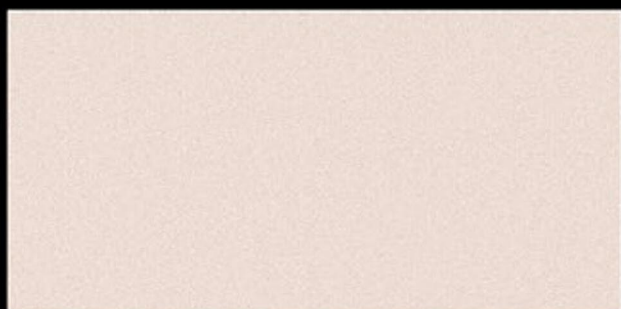
FROST  
RESISTANCE



RESISTANCE  
TO FIRE

**Matt Finish...!!**

# Wall Tiles 300X600 MM



1-6039\_LT  
2-6039\_HL\_1  
3-6039\_HL\_2  
5-6039\_DK



1-6039\_LT\_2  
2-6039\_HL\_3  
3-6039\_HL\_4  
4-6039\_DK\_2



WATERPROOF  
SURFACE



CHEMICAL  
RESISTANCE



FROST  
RESISTANCE

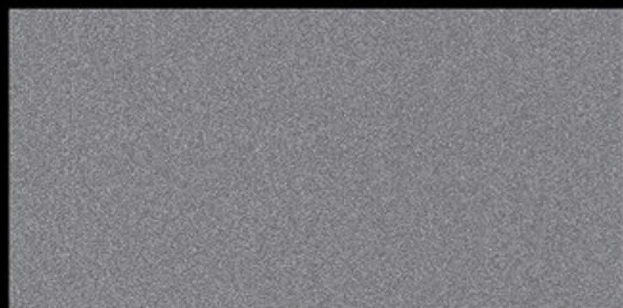
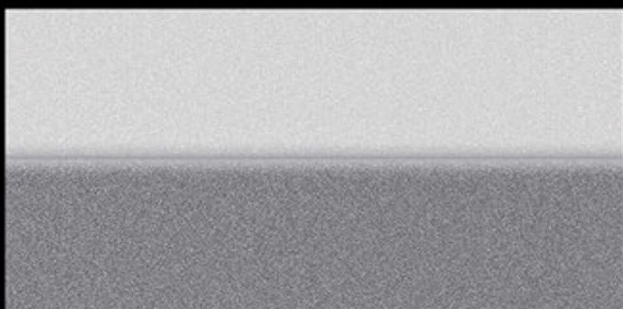
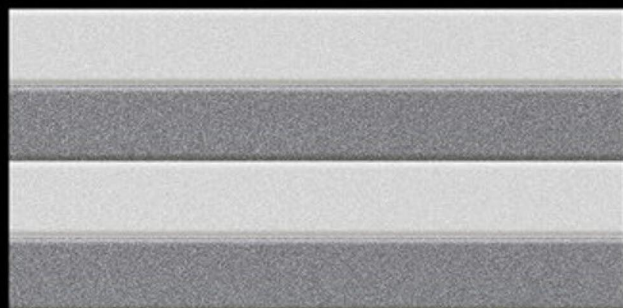
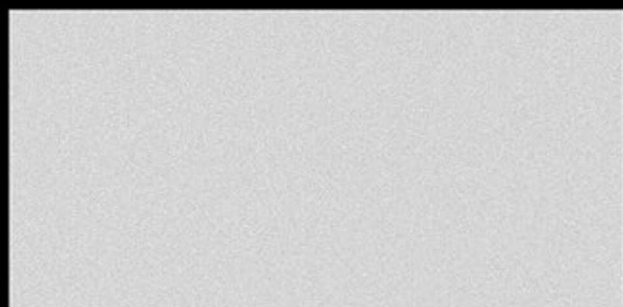


RESISTANCE  
TO FIRE

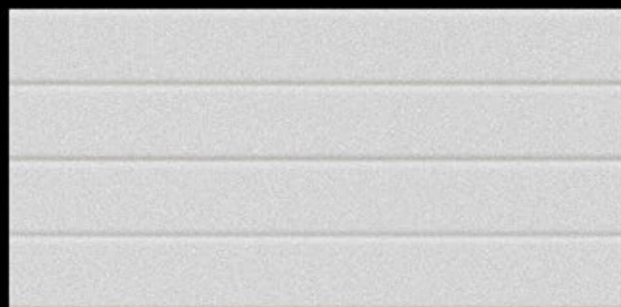
## Matt Finish...!!

# Wall Tiles

## 300X600 MM



1-6040\_LT  
2-6040\_HL\_1  
3-6040\_HL\_2  
5-6040\_DK



1-6040\_LT\_2  
2-6040\_HL\_3  
3-6040\_HL\_4  
4-6040\_DK\_2



WATERPROOF  
SURFACE



CHEMICAL  
RESISTANCE



FROST  
RESISTANCE

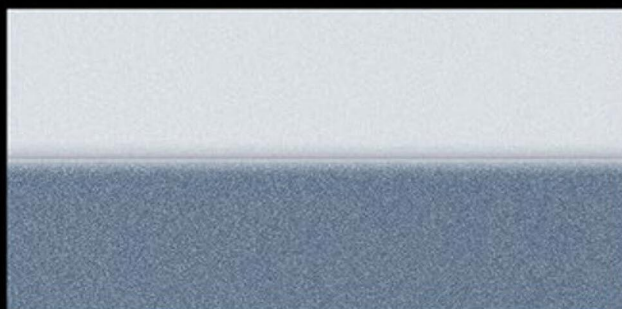
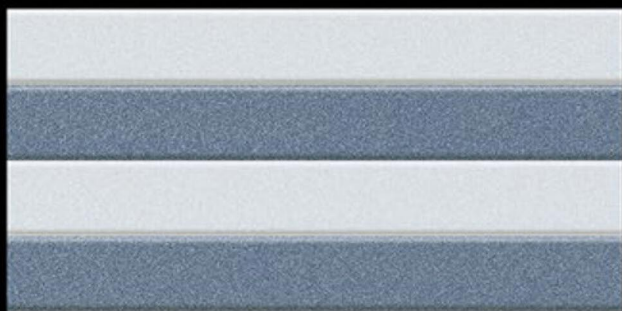
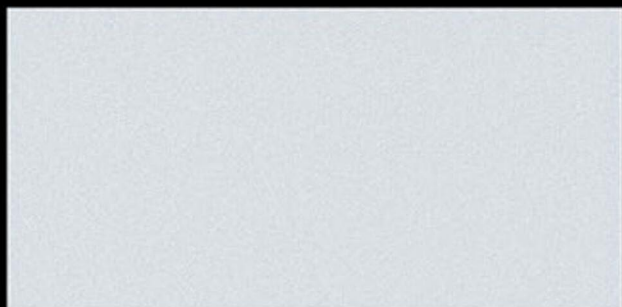


RESISTANCE  
TO FIRE

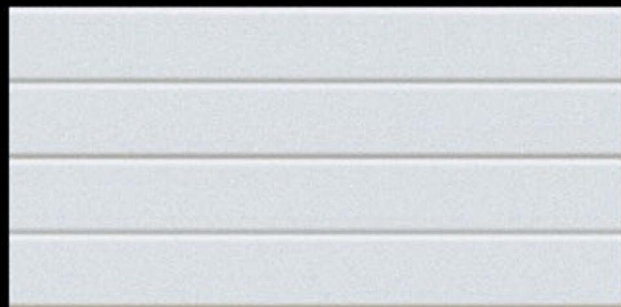
# Matt Finish...!!

# Wall Tiles

## 300X600 MM



1-6041\_LT  
2-6041\_HL\_1  
3-6041\_HL\_2  
5-6041\_DK



1-6041\_LT\_2  
2-6041\_HL\_3  
3-6041\_HL\_4  
4-6041\_DK\_2



WATERPROOF  
SURFACE



CHEMICAL  
RESISTANCE



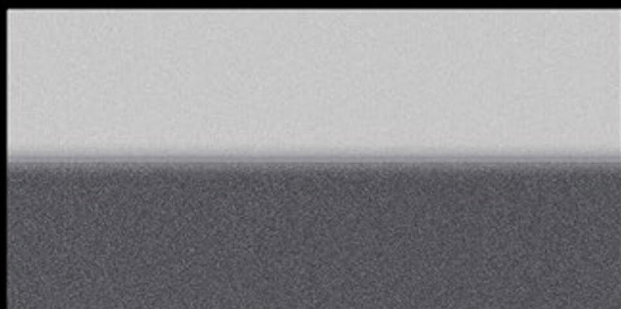
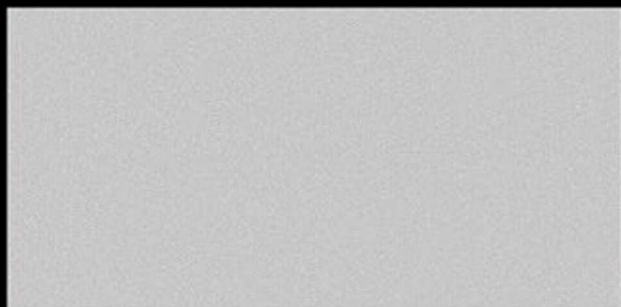
FROST  
RESISTANCE



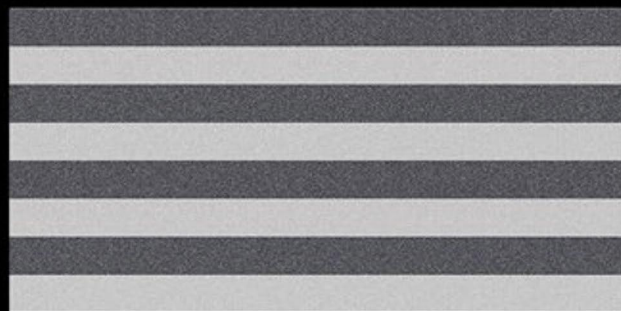
RESISTANCE  
TO FIRE

**Matt Finish...!!**

# Wall Tiles 300X600 MM



1-6042\_LT  
2-6042\_HL\_1  
3-6042\_HL\_2  
5-6042\_DK



1-6042\_LT\_2  
2-6042\_HL\_3  
3-6042\_HL\_4  
4-6042\_DK\_2



WATERPROOF  
SURFACE



CHEMICAL  
RESISTANCE



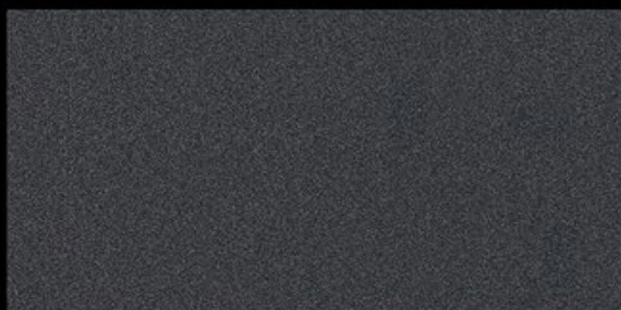
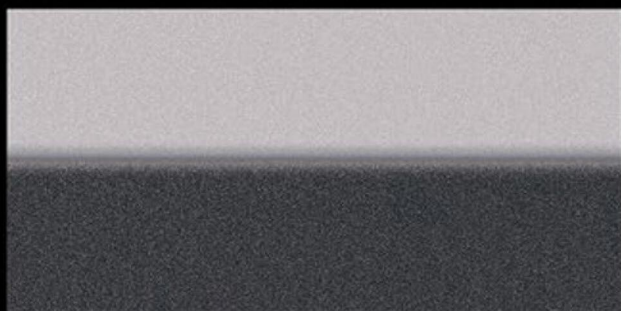
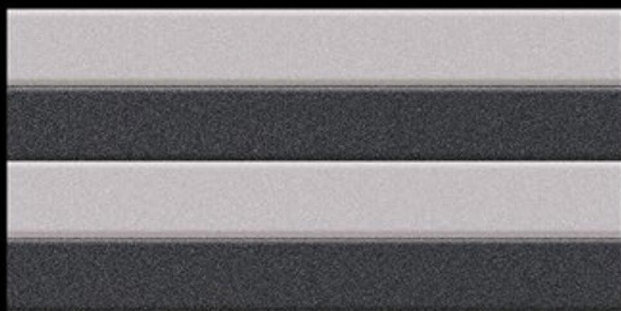
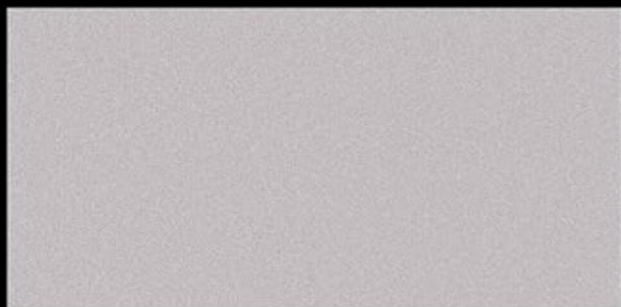
FROST  
RESISTANCE



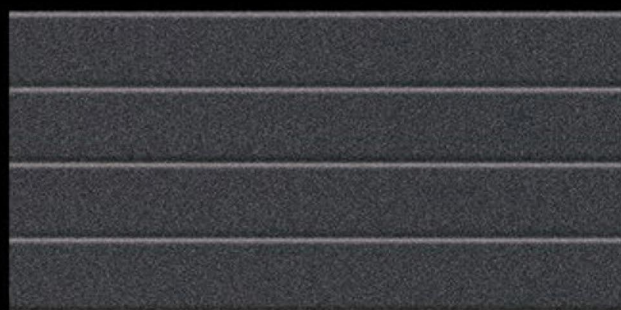
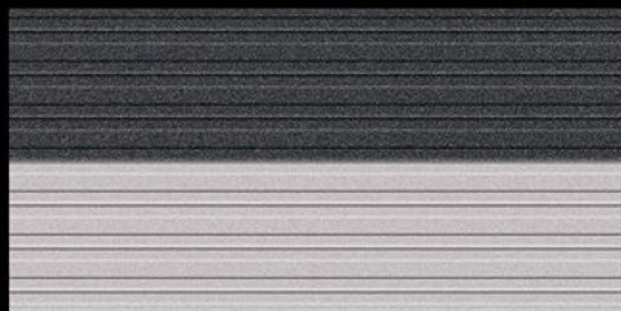
RESISTANCE  
TO FIRE

**Matt Finish...!!**

# Wall Tiles 300X600 MM



1-6043\_LT  
2-6043\_HL\_1  
3-6043\_HL\_2  
5-6043\_DK



1-6043\_LT\_2  
2-6043\_HL\_3  
3-6043\_HL\_4  
4-6043\_DK\_2



WATERPROOF  
SURFACE



CHEMICAL  
RESISTANCE



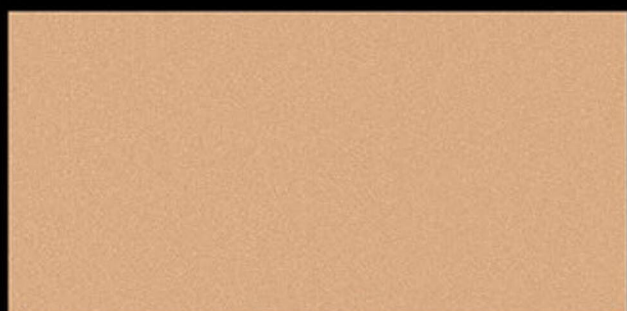
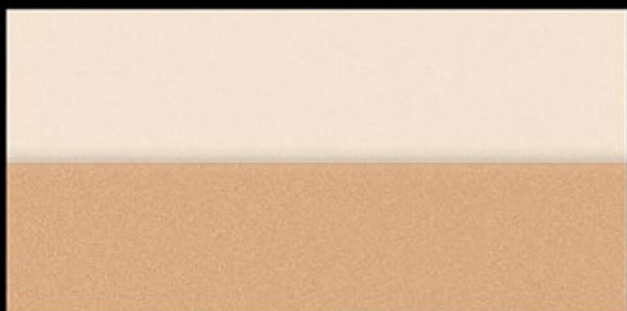
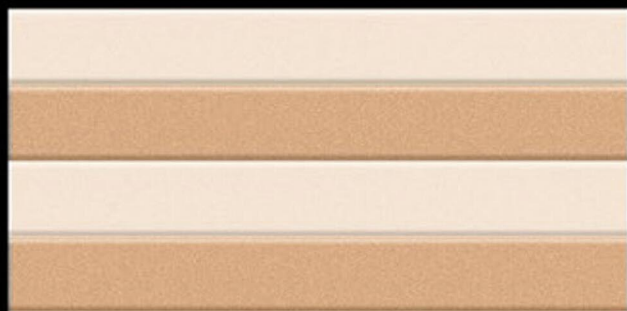
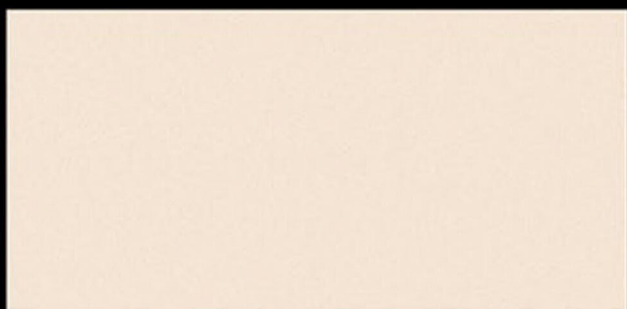
FROST  
RESISTANCE



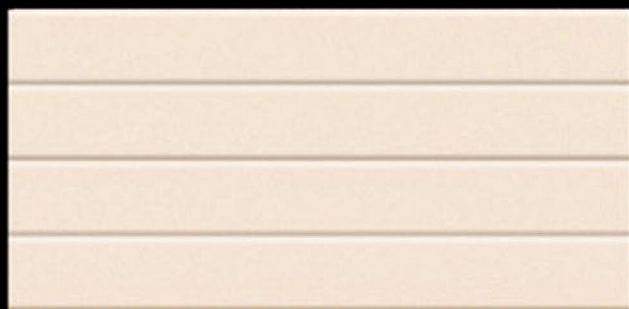
RESISTANCE  
TO FIRE

**Matt Finish...!!**

# Wall Tiles 300X600 MM



1-6044\_LT  
2-6044\_HL\_1  
3-6044\_HL\_2  
5-6044\_DK



1-6044\_LT\_2  
2-6044\_HL\_3  
3-6044\_HL\_4  
4-6044\_DK\_2



WATERPROOF  
SURFACE



CHEMICAL  
RESISTANCE



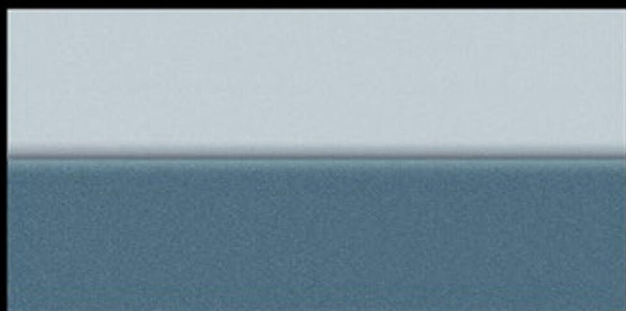
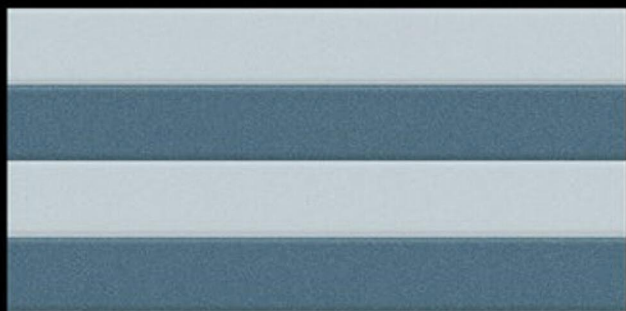
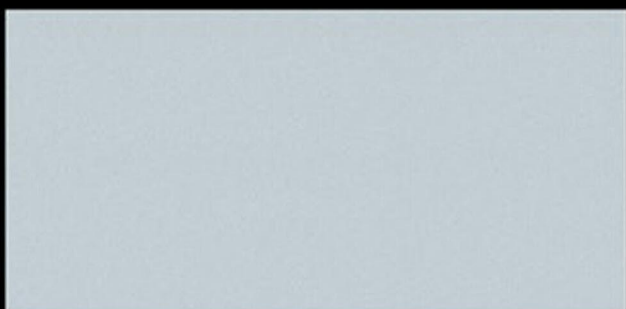
FROST  
RESISTANCE



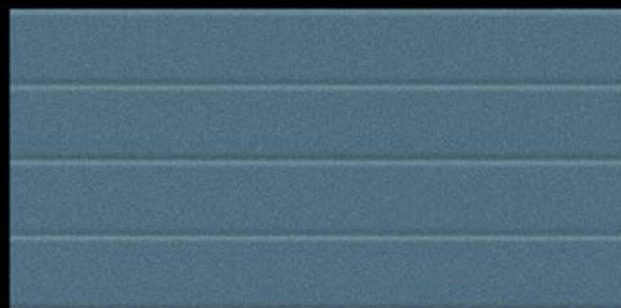
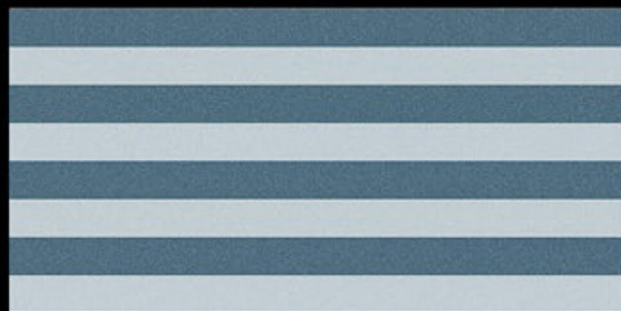
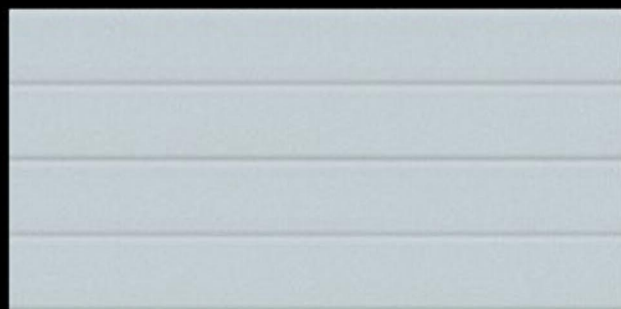
RESISTANCE  
TO FIRE

**Matt Finish...!!**

# Wall Tiles 300X600 MM



1-6045\_LT  
2-6045\_HL\_1  
3-6045\_HL\_2  
5-6045\_DK



1-6045\_LT\_2  
2-6045\_HL\_3  
3-6045\_HL\_4  
4-6045\_DK\_2



WATERPROOF SURFACE



CHEMICAL RESISTANCE



FROST RESISTANCE

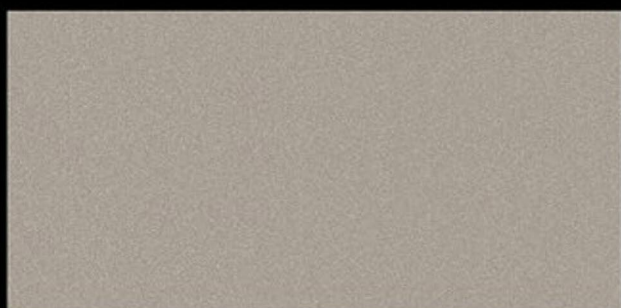
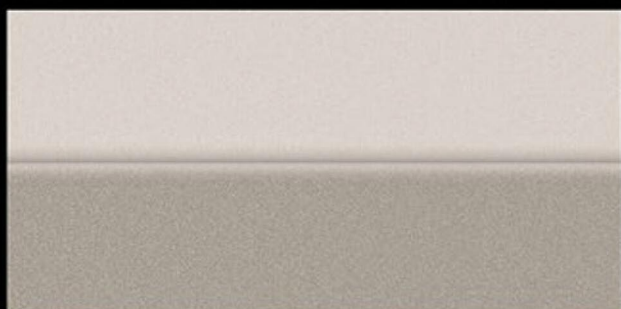
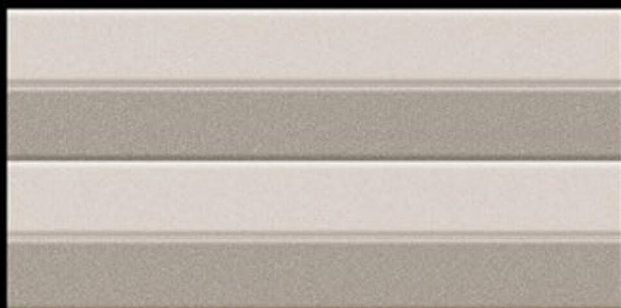
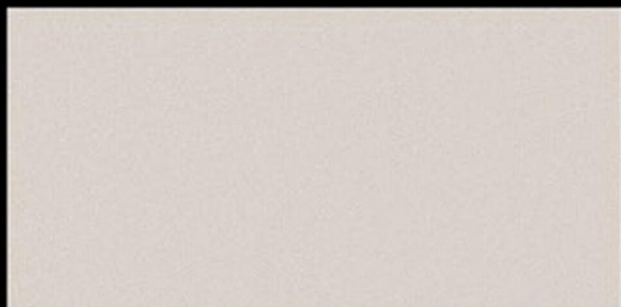


RESISTANCE TO FIRE

**Matt Finish...!!**

# Wall Tiles

## 300X600 MM



1-6046\_LT  
2-6046\_HL\_1  
3-6046\_HL\_2  
5-6046\_DK



1-6046\_LT\_2  
2-6046\_HL\_3  
3-6046\_HL\_4  
4-6046\_DK\_2



WATERPROOF SURFACE



CHEMICAL RESISTANCE



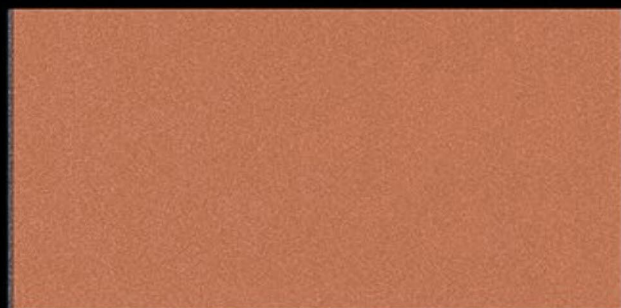
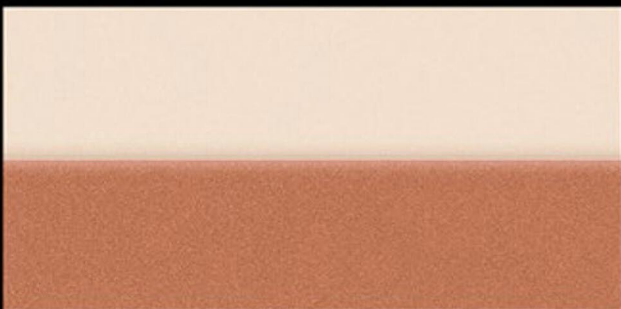
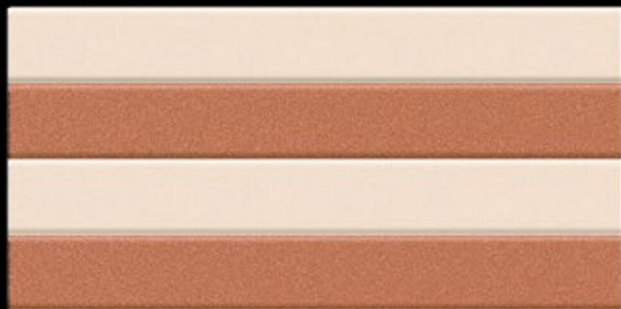
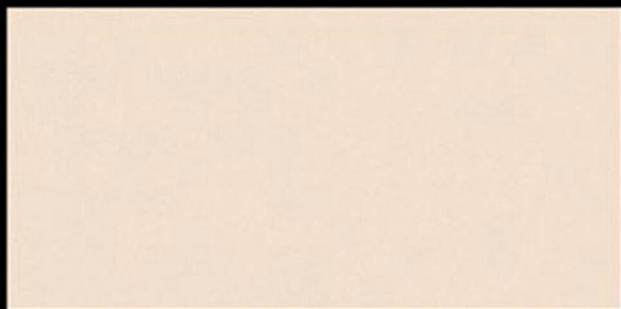
FROST RESISTANCE



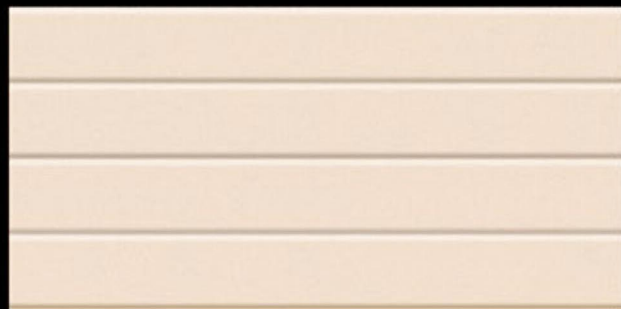
RESISTANCE TO FIRE

**Matt Finish...!!**

# Wall Tiles 300X600 MM



1-6047\_LT  
2-6047\_HL\_1  
3-6047\_HL\_2  
5-6047\_DK



1-6047\_LT\_2  
2-6047\_HL\_3  
3-6047\_HL\_4  
4-6047\_DK\_2



WATERPROOF  
SURFACE



CHEMICAL  
RESISTANCE



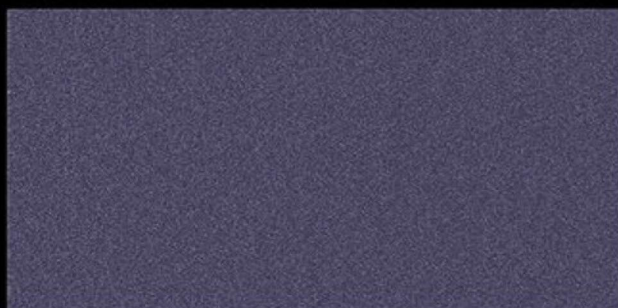
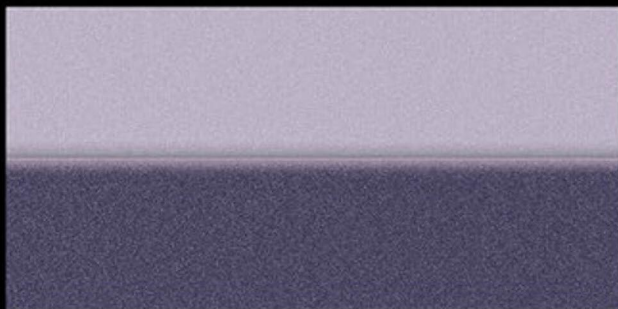
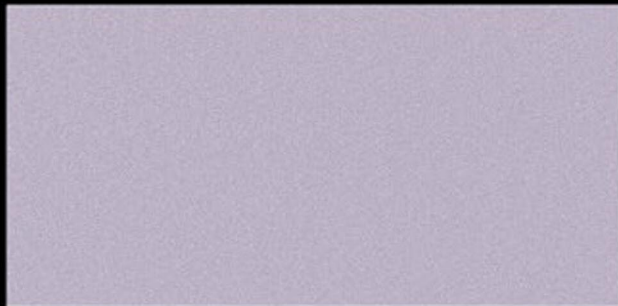
FROST  
RESISTANCE



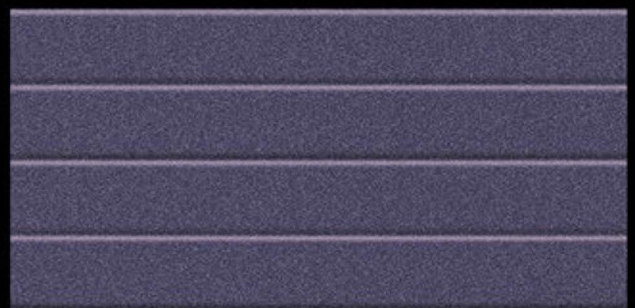
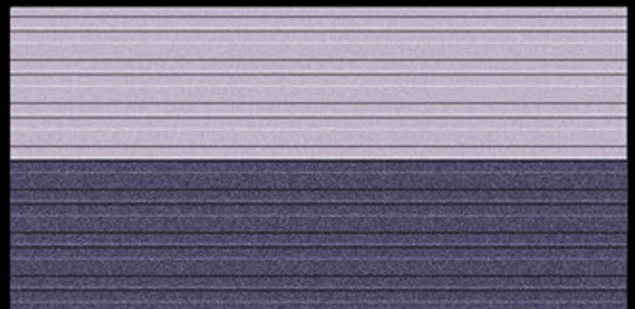
RESISTANCE  
TO FIRE

**Matt Finish...!!**

# Wall Tiles 300X600 MM



1-6048\_LT  
2-6048\_HL\_1  
3-6048\_HL\_2  
5-6048\_DK



1-6048\_LT\_2  
2-6048\_HL\_3  
3-6048\_HL\_4  
4-6048\_DK\_2



WATERPROOF  
SURFACE



CHEMICAL  
RESISTANCE



FROST  
RESISTANCE

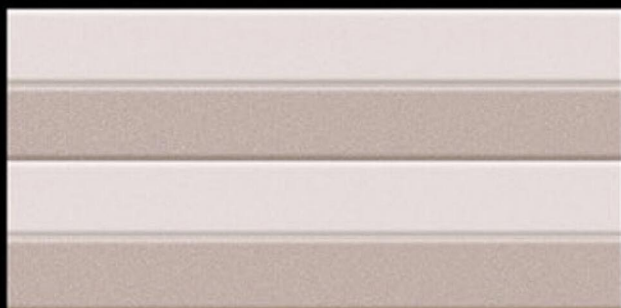
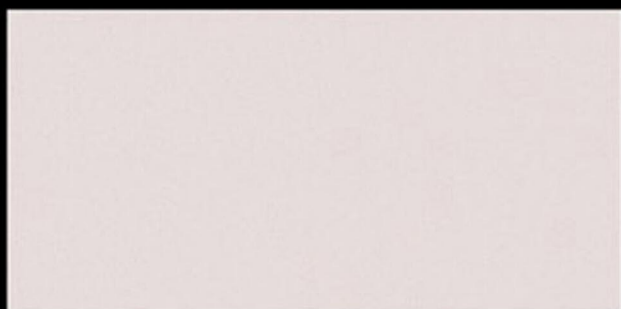


RESISTANCE  
TO FIRE

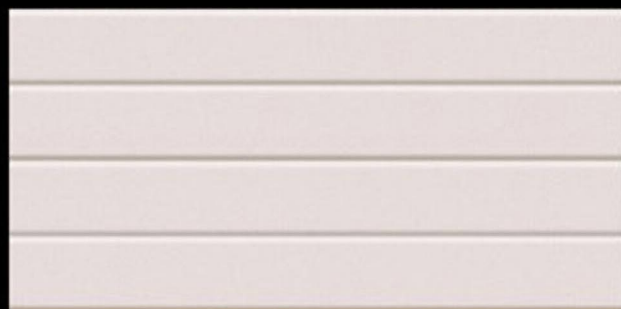
**Matt Finish...!!**

# Wall Tiles

## 300X600 MM



1-6049\_LT  
2-6049\_HL\_1  
3-6049\_HL\_2  
5-6049\_DK



1-6049\_LT\_2  
2-6049\_HL\_3  
3-6049\_HL\_4  
4-6049\_DK\_2



WATERPROOF  
SURFACE



CHEMICAL  
RESISTANCE



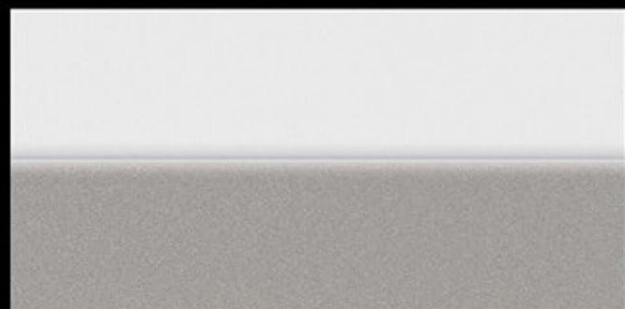
FROST  
RESISTANCE



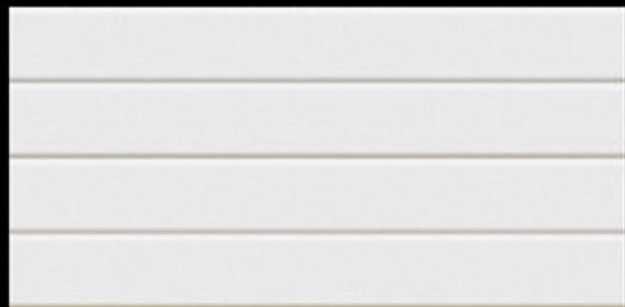
RESISTANCE  
TO FIRE

### Matt Finish...!!

# Wall Tiles 300X600 MM



1-6050\_LT  
2-6050\_HL\_1  
3-6050\_HL\_2  
5-6050\_DK



1-6050\_LT\_2  
2-6050\_HL\_3  
3-6050\_HL\_4  
4-6050\_DK\_2



WATERPROOF SURFACE



CHEMICAL RESISTANCE



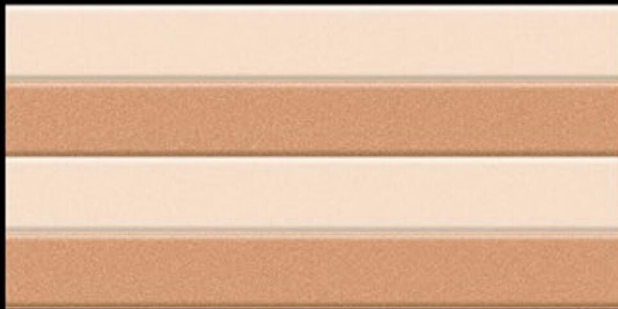
FROST RESISTANCE



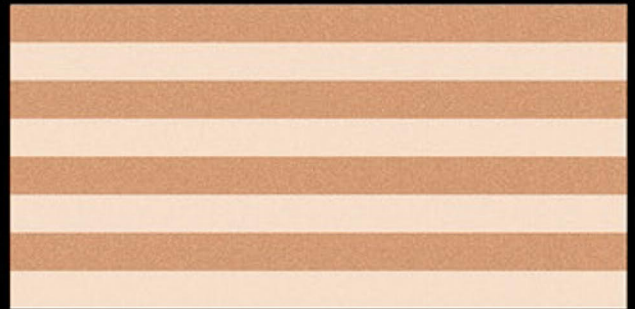
RESISTANCE TO FIRE

**Matt Finish...!!**

# Wall Tiles 300X600 MM



1-6051\_LT  
2-6051\_HL\_1  
3-6051\_HL\_2  
5-6051\_DK



1-6051\_LT\_2  
2-6051\_HL\_3  
3-6051\_HL\_4  
4-6051\_DK\_2



WATERPROOF  
SURFACE



CHEMICAL  
RESISTANCE



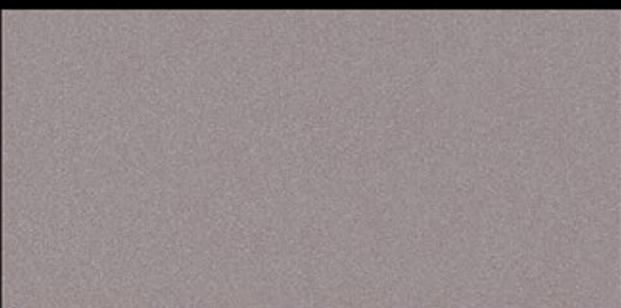
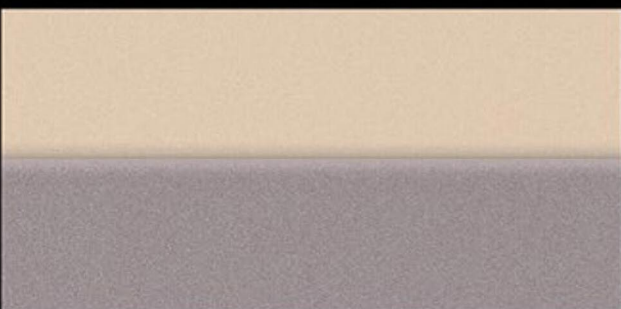
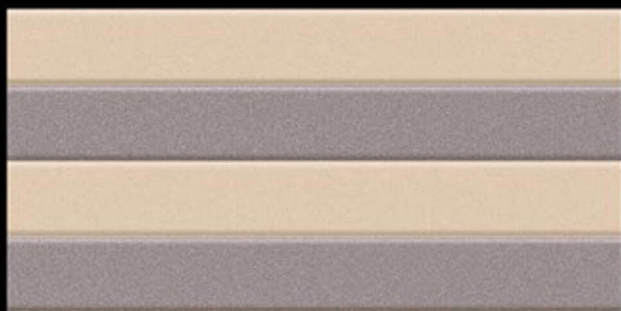
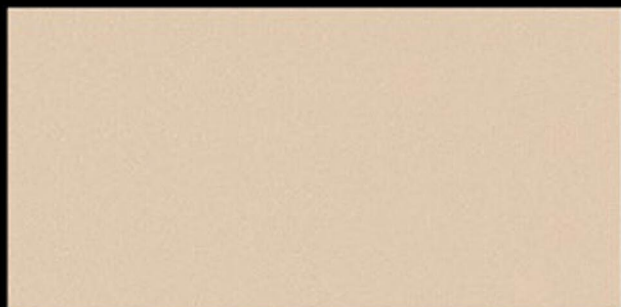
FROST  
RESISTANCE



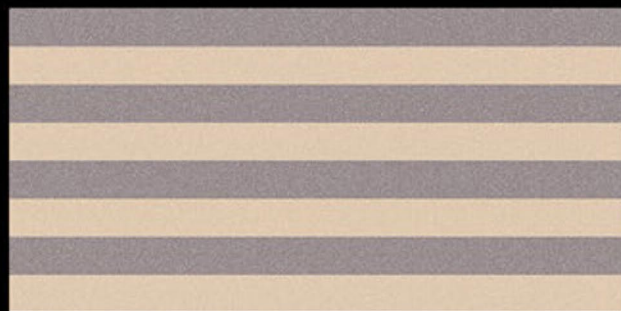
RESISTANCE  
TO FIRE

**Matt Finish...!!**

# Wall Tiles 300X600 MM



1-6052\_LT  
2-6052\_HL\_1  
3-6052\_HL\_2  
5-6052\_DK



1-6052\_LT\_2  
2-6052\_HL\_3  
3-6052\_HL\_4  
4-6052\_DK\_2



WATERPROOF  
SURFACE



CHEMICAL  
RESISTANCE



FROST  
RESISTANCE

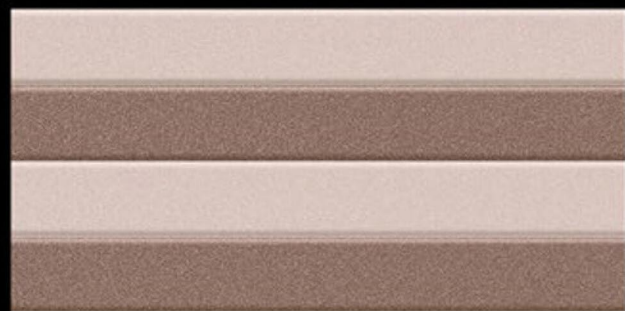
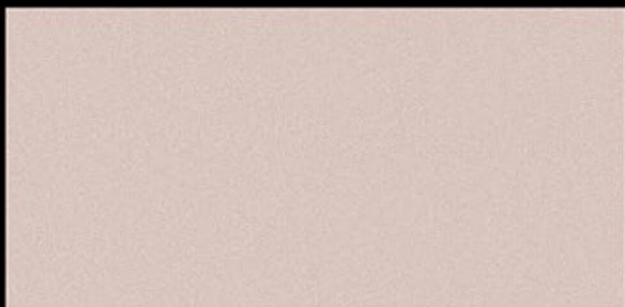


RESISTANCE  
TO FIRE

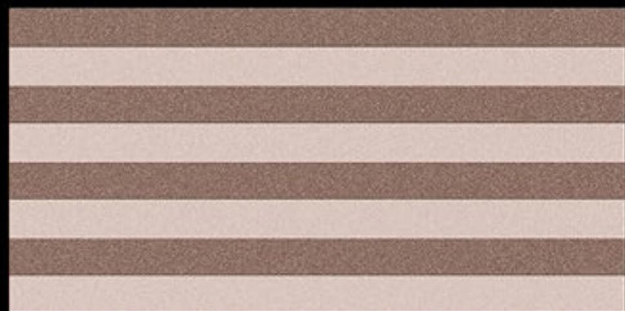
## Matt Finish...!!

# Wall Tiles

## 300X600 MM



1-6053\_LT  
2-6053\_HL\_1  
3-6053\_HL\_2  
5-6053\_DK



1-6053\_LT\_2  
2-6053\_HL\_3  
3-6053\_HL\_4  
4-6053\_DK\_2



WATERPROOF SURFACE



CHEMICAL RESISTANCE



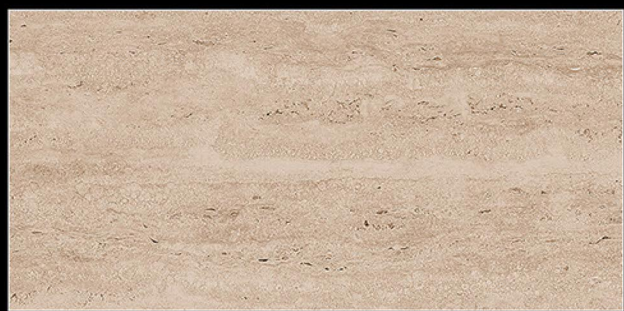
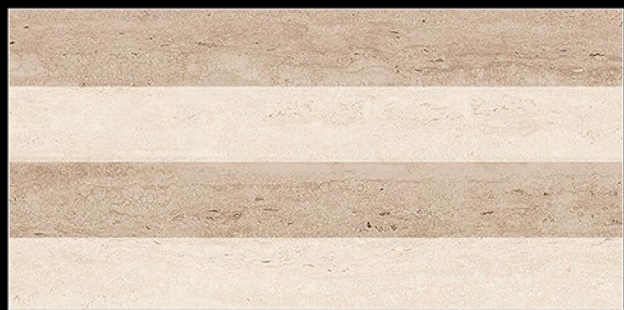
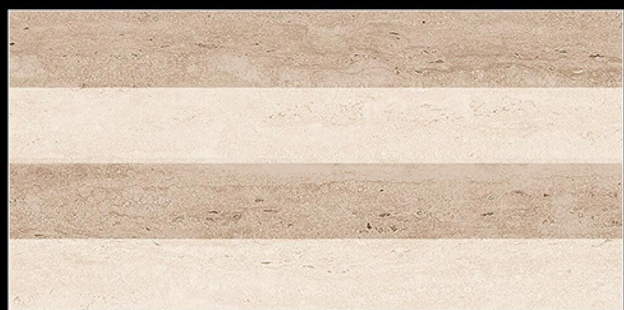
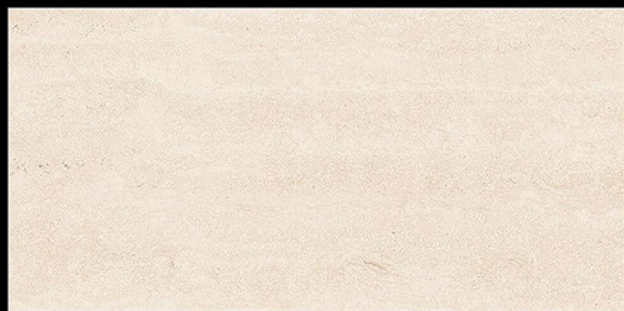
FROST RESISTANCE



RESISTANCE TO FIRE

**Matt Finish...!!**

# WALL TILES 300X600 MM



5083\_LT-(Random)

5083\_HL1-(Punch)

5083\_DK-(Random)

5083\_LT-(Random)

5083\_HL2-(Punch)

5083\_DK-(Random)



WATERPROOF



ACID RESISTANT



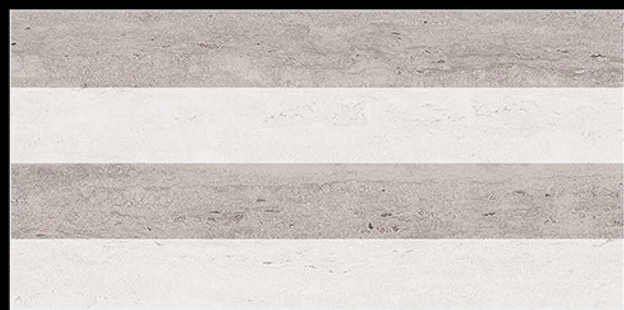
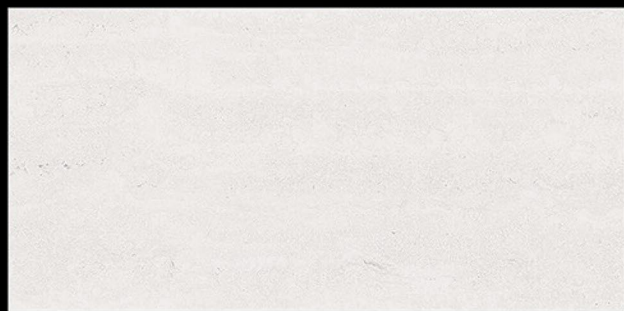
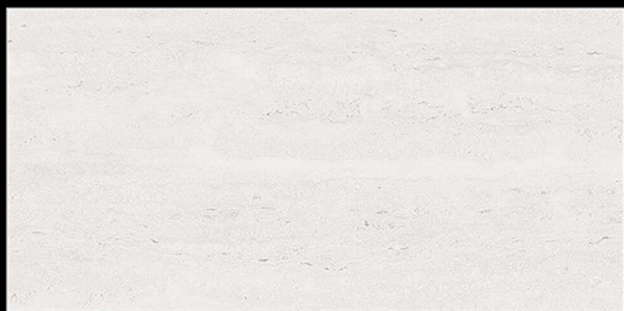
FROST RESISTANT



FIRE RESISTANT

**MATT FINISH..!!**

# WALL TILES 300X600 MM



5084\_LT-(Random)

5084\_HL1-(Punch)

5084\_DK-(Random)

5084\_LT-(Random)

5084\_HL2-(Punch)

5084\_DK-(Random)



WATERPROOF



ACID RESISTANT



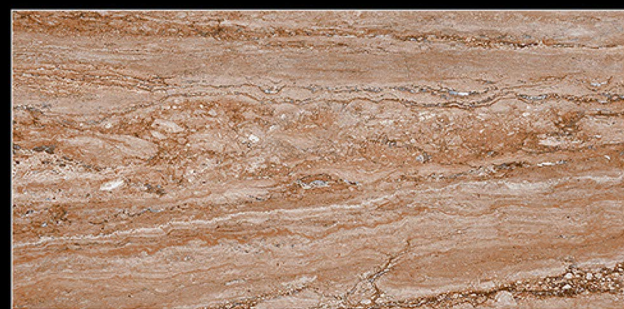
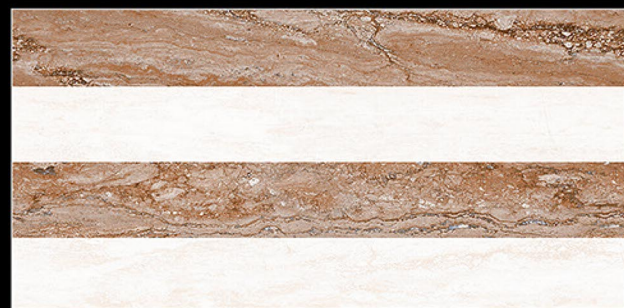
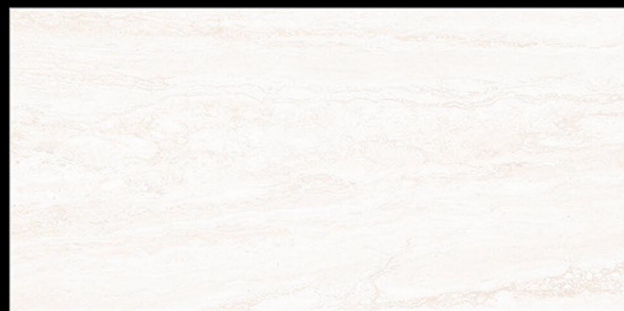
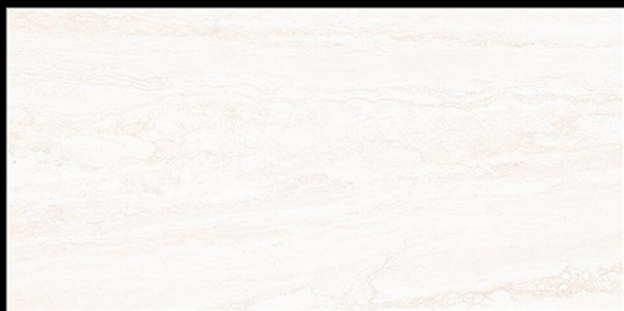
FROST RESISTANT



FIRE RESISTANT

## MATT FINISH..!!

# WALL TILES 300X600 MM



5085\_LT-(Random)

5085\_HL1-(Punch)

5085\_DK-(Random)

5085\_LT-(Random)

5085\_HL1-(Punch)

5085\_DK-(Random)



WATERRESISTANT



ACIDRESISTANT



FROSTRESISTANT



FIRERESISTANT

**MATT FINISH..!!**

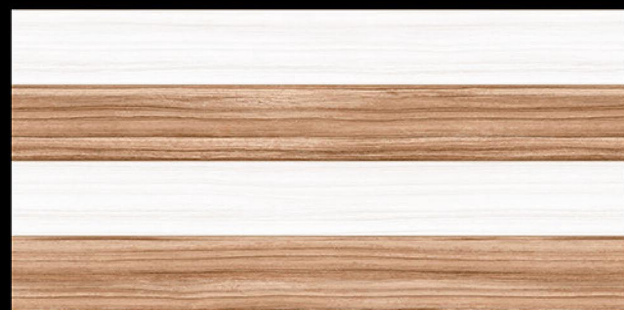
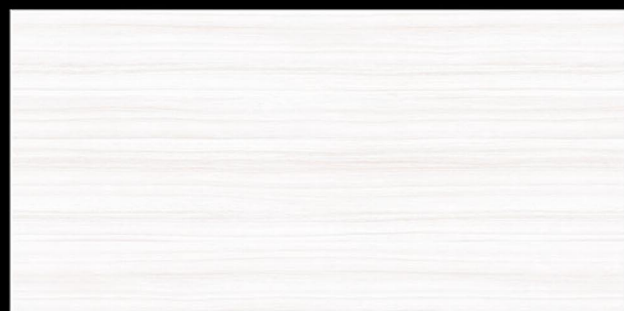
# WALL TILES 300X600 MM



8017\_LT-(Random)

8017\_HL1-(Punch)

8017\_DK-(Random)



8018\_LT-(Random)

8018\_HL1-(Punch)

8018\_DK-(Random)



WATERPROOF



ACID RESISTANT



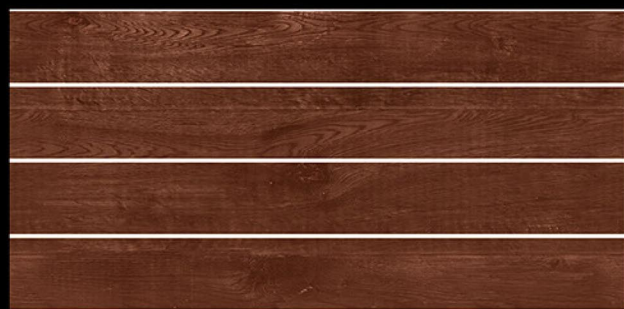
FROST RESISTANT



FIRE RESISTANT

**MATT FINISH..!!**

# WALL TILES 300X600 MM



8017\_LT-(Random)

8017\_HL1-(Punch)

8017\_DK-(Random)

8022\_LT

8022\_HL2-(Punch)

8022\_DK



WATERRESISTANT



ACIDRESISTANT



FROSTRESISTANT



FIRERESISTANT

**MATT FINISH..!!**

